

Try them on your airplane!!!

Technical Information

E-Series
Light Years Ahead

E-Series

AveoFlash LP™
PosiStrobe XP™

1

Cut the lights
on white line



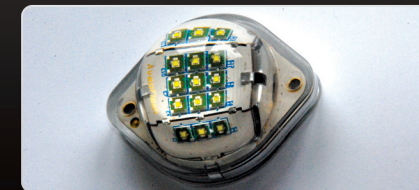
2

Tape them on your
airplane



3

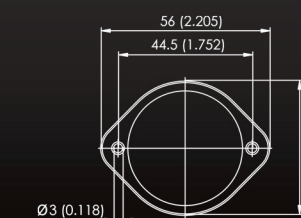
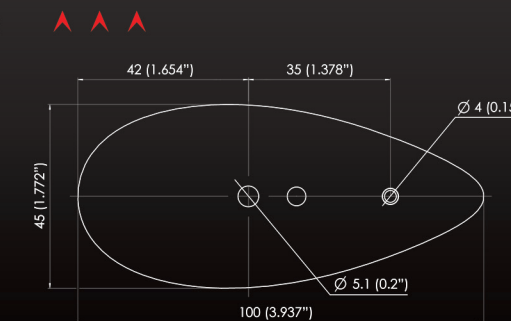
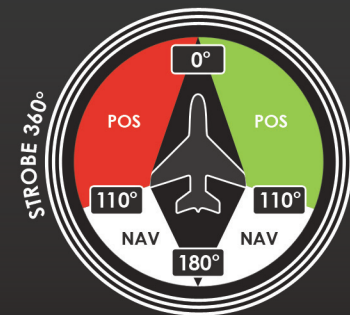
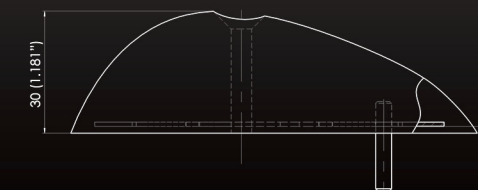
Visit your local Dealer
online and order



- > Power supply: Multi - Voltage (9V - 32V)
- > Current consumption: for 12V

Wing light:	steady	0.24A
	flash	1.65A (@ 200ms)
PosiStrobe™:	steady	0.11A
	flash	0.65A (@ 200ms)
PosiStrobe XP™:	steady	0.12A
	flash	1.3A (@ 200ms)

- > Reverse polarity protected
- > Over voltage protected
- > Water & vibration resistant
- > Wing Nav/Position/Strobe 3-in-1 Lights diagram
- > Weight of wing light: 83 g 2.93 oz
- > Weight of PosiStrobe™: 50 g 1.76 oz



dimension in mm (inches)

First LIFETIME WARRANTY* in the World

First LIFETIME WARRANTY* in the World

* Refer to website for copy of Official Warranty
(c) 2009 Aveo Engineering - U.S. and International Patents Pending

AveoEngineering™
www.aveoengineering.com

For Experimental / Kit / Light Sport Planes

Be seen. Not sorry.